

Raster PrintStation provides you with tools to control your output device. Handling various input file formats, Raster PrintStation allows you to preview jobs, hold and release queues, redirect and reorder jobs in an output queue. Job queues can be controlled locally or remotely through a standard internet browser. In addition, the user has access to functions such as cropping, tiling and step-and-repeat.

## Output Family

Managing your  
output device

### Raster PrintStation

#### Highlights

- Supports a wide range of input file formats
- Multiple spoolers for automating output setup
- Advanced functions to preview jobs prior to output
- Enhanced step-and-repeat, tiling or cropping functions
- Supports over 200 output devices

#### Features and Benefits

##### Wide Range of Input File Formats

Raster PrintStation works with file formats supported by most major RIP and workflow vendors, including 1-bit, 2-bit and 8-bit, separation and composite files in TIFF, Harlequin PageBuffer and Compose NetFlow Raster formats.

##### Step-and-Repeat

Raster PrintStation provides a step-and-repeat feature which enables printing of multiple copies of the same job in a user pre-defined area, quickly and easily. This is ideal for producing multiple proofs of jobs for client's use or for in-house reference. This facility offers accurate controls when repeating jobs in horizontal and vertical directions

##### Preview before Print

Raster PrintStation provides thumbnail previews of individual ripped files. In addition, users can view job separations pixel-by-pixel or at a reduced scale to fit screen. Multiple separations and colour composites of the same page can be previewed and a thumbnail view allows users to preview selected areas simultaneously for easy navigation.

##### Flexible tiling for oversized jobs

The Raster PrintStation tiling feature lets you output jobs that are larger than the printer or media format by creating smaller tiles. The easy-to-use interface gives instant visual feedback on individual tile segment. The tiling features can automatically print precise break points and overlaps for easy assembly.

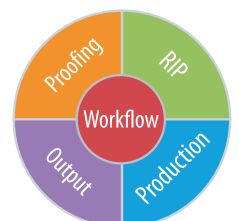
##### Over 200 Devices Supported

Raster PrintStation integrates seamlessly with Compose interface kits, which are available for imagesetters, platesetters, large format inkjet plotters and laser printers from all major manufacturers.

**compose**

An Open Future

[www.compose.com.hk](http://www.compose.com.hk) [www.compose.co.uk](http://www.compose.co.uk) [www.composeusa.com](http://www.composeusa.com)



# Over 200 Devices Supported

Raster PrintStation drives imagesetters, platersetters, large-format inkjet printers and laser printers from all major manufacturers.

## Imagesetter / Platesetter

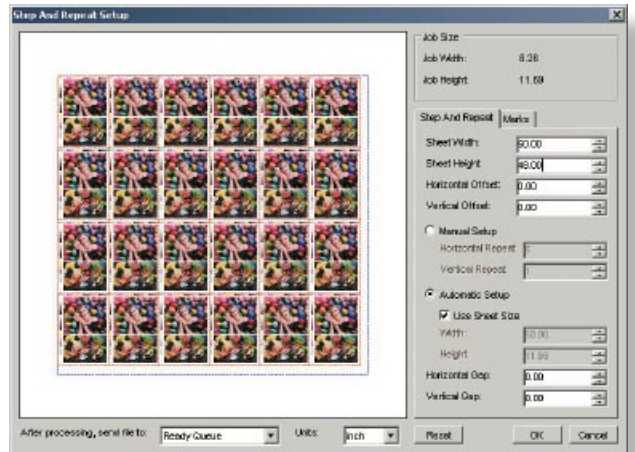
Agfa	ProSet 9400, 9550, 9600, 9700, 9800, 9836 Avantra 20, 25, 30, 36, 44, 25XT, 44XT Accuset 800, 1000, 1000W, 1500 SelectSet 2400, 5000, 7000 Phoenix 2250
AB Dick	DPM-2340, DPM-2508, DPX
Creo / Creo-Scitex	Dolev 200, 250, 400, 450, 450F Dolev 2 Press, 2 Press+, 4 News, 4 Press Dolev 4Press V, 800, 800V, 800V2, 800V3 Trendsetter 4557, 5067, 5080, 5467, 5880 ThermoFlex & ThermoFlex TFI 5067, 5280
Symbolic Sciences	Emerald Sapphire, Emerald 4, Emerald 4, Emerald Newsjet
Dainippon Screen	Screen DT-R1065, DT-R2035, DT-R3075, DT-R3100, DT-R5120, DT-R6120 Screen MT-R1100, MT-R1120 Screen FT-R3035, FT-R3050, FT-R5055 PlateRite PT-R4100, PT-R4300, PT-R8000 (II), PT-R8100, PT-R8600, PT-R8800
ECRM	Pelbox VR30, 36, 45 Pelbox 72, 1030, 1045, 1245, 1545, Pelbox 2030, 2530, 3030 Mako 36x0, 46x0, 56x0, Knockout 4550, Stingray 63, TigerCat, WildCat Prepress Varityper V5300M
Escher-Grad	Cobalt-4, Cobalt-8
Heidelberg	Herkules, Pro, Pro M, NP, Basic, Elite Quasar, Drysetter, SignsetterPro
Iwatsu	ELEFAX LP-510e, LP610e, LP-650x
Linotype	Lino 200, 260, 300, 300Densy, 330, 500 Lino 530, 560, 550 Densy
Luscher	XPose! 75, 130, 160, 180
Presstek	Dimension 200, 400, 800, Karat
Scangraphic	Othello, Apollo, Largo
Strobbe	PS 24, PS 36

## Large Format Plotters

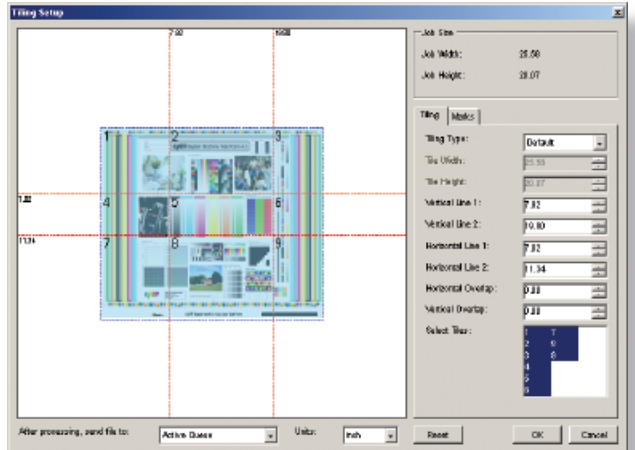
Epson	Stylus Photo 2100, 2200, 2400 Stylus Pro 4000, 4400, 4800, 5000, 5500, 4880 Stylus Pro 7000, 7400, 7500, 7600, 7800, 7880 Stylus Pro 9000, 9400, 9500, 9600, 9800, 9880 Stylus Pro 10000, 10600, 11880
Hewlett Packard	DesignJet 10PS, 20PS, 50PS, 500, 800, 1050c DesignJet 2000, 2500, 3000, 3500, 5000, 5500 DesignJet Z2100, Z3100, Z6100
Canon	BJC-8500, W-2200, W-6400, W-7200, W-8200, W-8400 iPF 5000, 6100, 8000S, 8100, 9000, 9000S, 9100

## Laser Printers

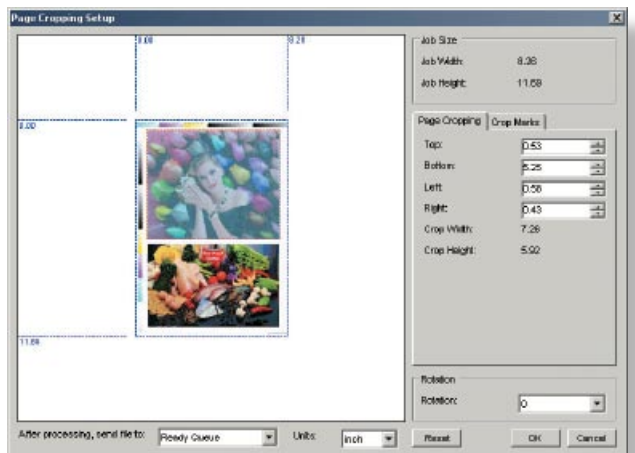
Epson	AcuLaser 8000, 8500, 8600, 9100
Hewlett Packard	LaserJet 5000, 5100, 8100, 8150, 9000 Color LaserJet 5500, 9500
OKI	C9600, C9650 DTP3600
Konica Minolta	Bizhub C550, 1050



Step and Repeat



Tiling



Cropping



Copyright © 2008 Compose. All rights reserved.  
Compose logo is the trademark of Compose System Limited and its subsidiaries.  
All other brands and product names are trademarks or registered trademarks of their respective owners.  
All specifications and price changes are subject to change without notice.  
Compose cannot accept liability for any loss or damage arising from the use of information or particulars in this document.