

Lightning TIFF is a high performance TIFF output plug-in for the Harlequin RIP and Express RIP that is designed to replace the standard TIFF plug-in. As well as providing a significant number of additional features, its main benefit is its lightning fast performance; users will see anything up to a 4 times overall improvement in performance and throughput when it is used, depending on output mode, compression mode, resolution, screening, job content and platform.

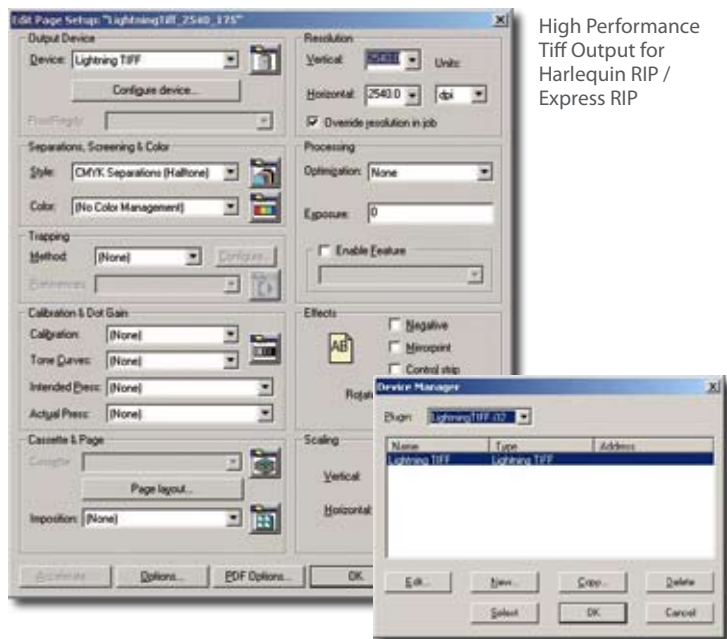
RIP Family

Maximum performance,
efficient data delivery

Lightning TIFF

Highlights

- Produces a wide range of data formats
- Offers a wide choice of compression formats
- Conventional & (extended) template naming
- High performance compression algorithms
- Multi-threaded on multi-core CPUs
- Advanced file and job scripting capabilities



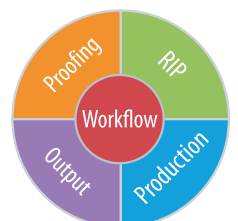
High Performance
Tiff Output for
Harlequin RIP /
Express RIP

Introduction

Lightning TIFF is a high performance TIFF output plug-in for the Harlequin / Express RIP that is designed to replace the standard TIFF plug-in. As well as providing a significant number of additional features, its main benefit is its lightning fast performance; users will see anything up to a 4 times overall improvement in performance and throughput when it is used, depending on output mode, compression mode, resolution, screening, job content and platform.

The high performance that the Lightning TIFF output plug-in achieves is obtained through a unique method for implementing CCITT compression, along with a significant number of code optimisation techniques that have been applied to all the various compression modes. In addition, Hamillroad engineers have built in the use of advanced multi-threading software techniques which when used with the latest multi-core CPUs, such as the Intel Core 2 Duo, provide a near linear additional increase in performance.

The results of this are the creation of TIFF files at previously unheard of speeds, allowing for both greatly increased throughput and faster last minute production of time critical plates.



Features & Benefits

Data Formats

As well as the formats supported by the standard TIFF plug-in, Lightning TIFF also supports tiled, single-file CMYK + Spot color and single-file frameinterleaved TIFF.

Compression Formats

As well as the formats supported by the standard TIFF plug-in, Lightning TIFF supports both CCITT Bilevel Fax Group 3 1D and 2D.

Conventional and (extended) Template Based Naming

In addition to the options provided by the standard TIFF plug-in, Lightning TIFF provides additional options for conventional based naming (the ability to place all output from a given job into its own folder and the ability to use the file name instead of the job name) and an extended set of template variables for template based naming.

High Performance Compression Formats

At the heart of Lightning TIFF are a wide range of unique and highly optimised high performance algorithms for implementing the standard compression methods required by all high-end workflows. These along with the multi-threading capabilities make Lightning TIFF the output plug-in of choice for the most demanding users and applications.

Multi-Threading

Taking advantage of the latest multi-core CPUs, Lightning TIFF is multi-threaded so as to provide maximum performance on today's hardware. This offers the highest performance possible, for last minute production of time critical jobs.

Advanced File and Job Scripting

In addition to per file (separation) post-processing, Lightning TIFF also provides per (end of) job post-processing. This combined with the ability to place all output from a job into its own unique folder allows for sophisticated customisation by writing post-process scripts to perform additional tasks.

Specifications

Data Formats

- Striped TIFF - TIFF revision 6.0, Section 3 (both single and multiple)
- Tiled TIFF - TIFF revision 6.0, Section 15
- Bilevel Images (monochrome) - TIFF revision 6.0, Section 3
- Grayscale Images - TIFF revision 6.0, Section 4
- RGB Full Color Images - TIFF revision 6.0, Section 6
- CMYK Images - TIFF revision 6.0, Section 16
- CMYK + Spot Color Images - TIFF revision 6.0, Section 16
- 1 bit per pixel
- 8 bits per pixel
- Separated (single file per separation)
- Composite - pixel interleaved
- Composite - band interleaved
- Composite - frame interleaved

Compression Formats

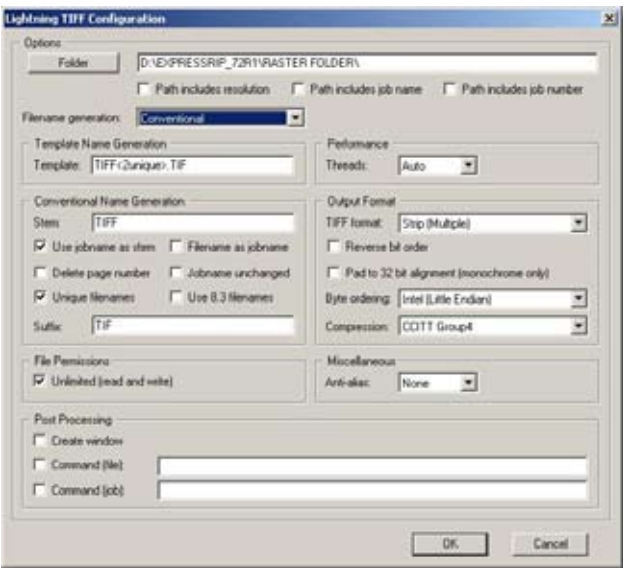
- Packbits - TIFF revision 6.0, Section 9
- Modified Huffman - TIFF revision 6.0, Section 10
- CCITT Bilevel Fax Group 3 1D - TIFF revision 6.0, Section 11
- CCITT Bilevel Fax Group 3 2D - TIFF revision 6.0, Section 11
- CCITT Bilevel Fax Group 4 - TIFF revision 6.0, Section 11
- LZW - TIFF revision 6.0, Section 13
- None

RIPs Supported

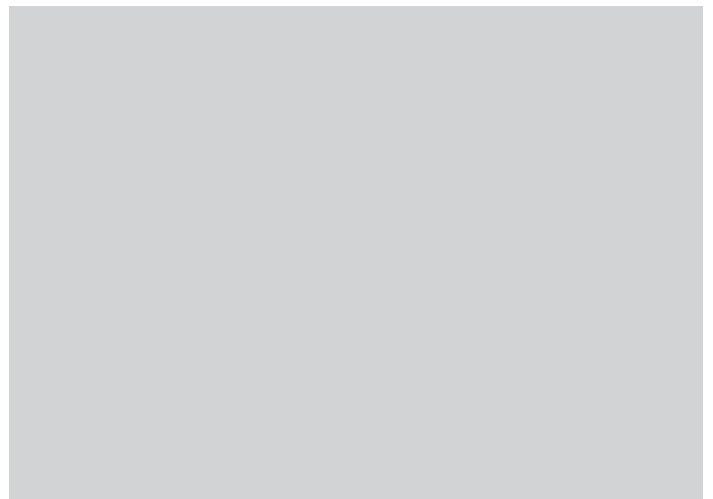
- Harlequin / Express RIP version 5
- Harlequin / Express RIP version 6 (Eclipse Release)
- Harlequin / Express RIP version 7 (Genesis Release)

Operating Systems Supported

- Windows 2000
- Windows XP
- Mac OSX (PowerPC – G3, G4 and G5)
- Max OSX (Intel)



Simple Lightning Tiff Setup in Harlequin / Express RIP



Copyright 2007 Compose. All rights reserved.
Compose logo is the trademark of Compose System Limited and its subsidiaries.
All other brands and product names are trademarks or registered trademarks of their respective owners.
All specifications and price changes are subject to change without notice.
Compose cannot accept liability for any loss or damage arising from the use of information or particulars in this document.